

**Training a foundation image model and
deploying it to millions of users**





"a bottle of wine on a marble table"
200 GPU hours



"a bottle of wine on a marble table"
1300 GPU hours



"a bottle of wine on a marble table"
11 000 GPU hours



"a bottle of wine on a marble table"
50 000 GPU hours

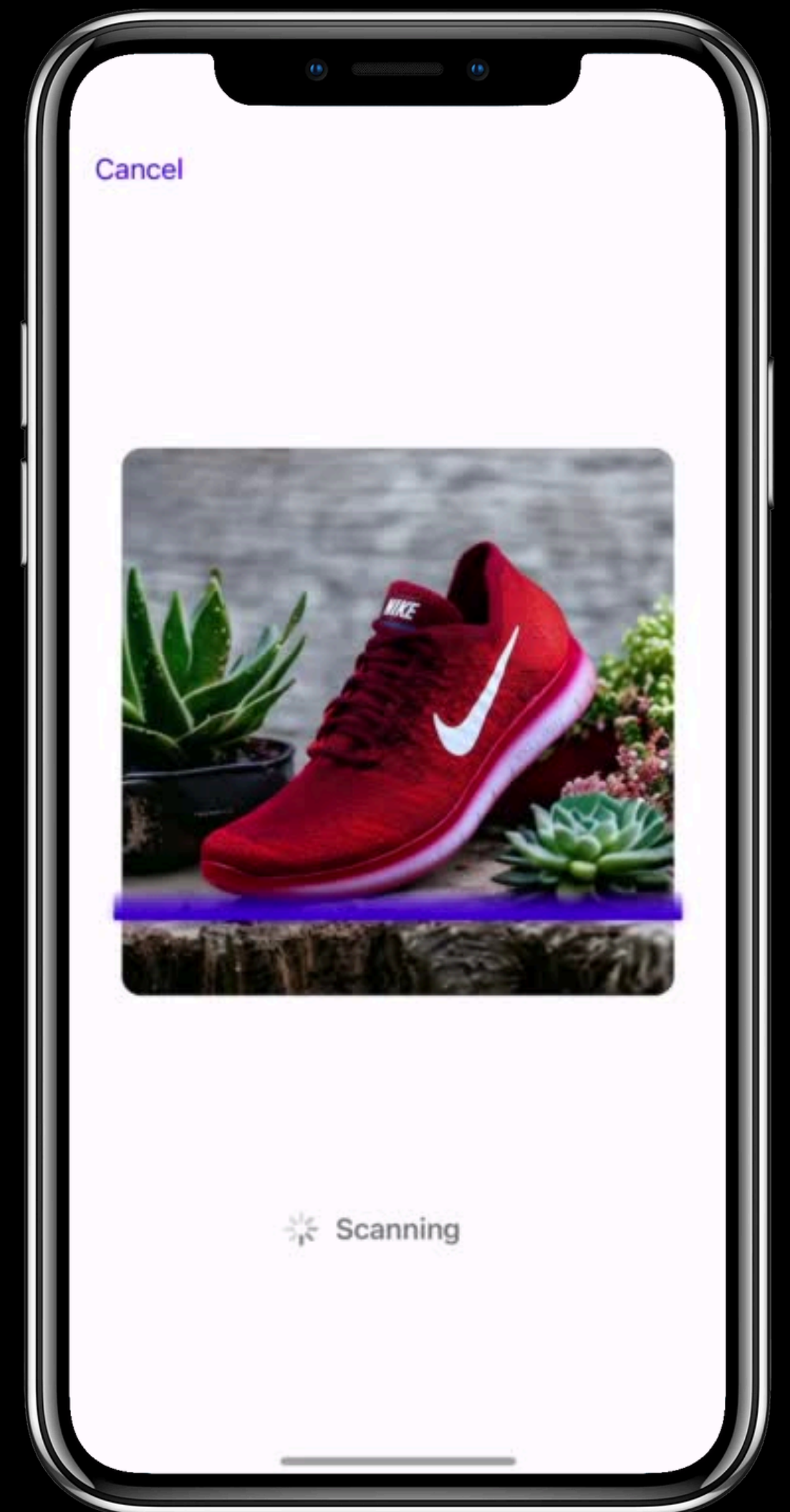
About Photoroom





We help sellers create images that sell

- Trusted by Amazon, Decathlon, Doordash
- 200+ million downloads
- Available on Mobile, Web, and API





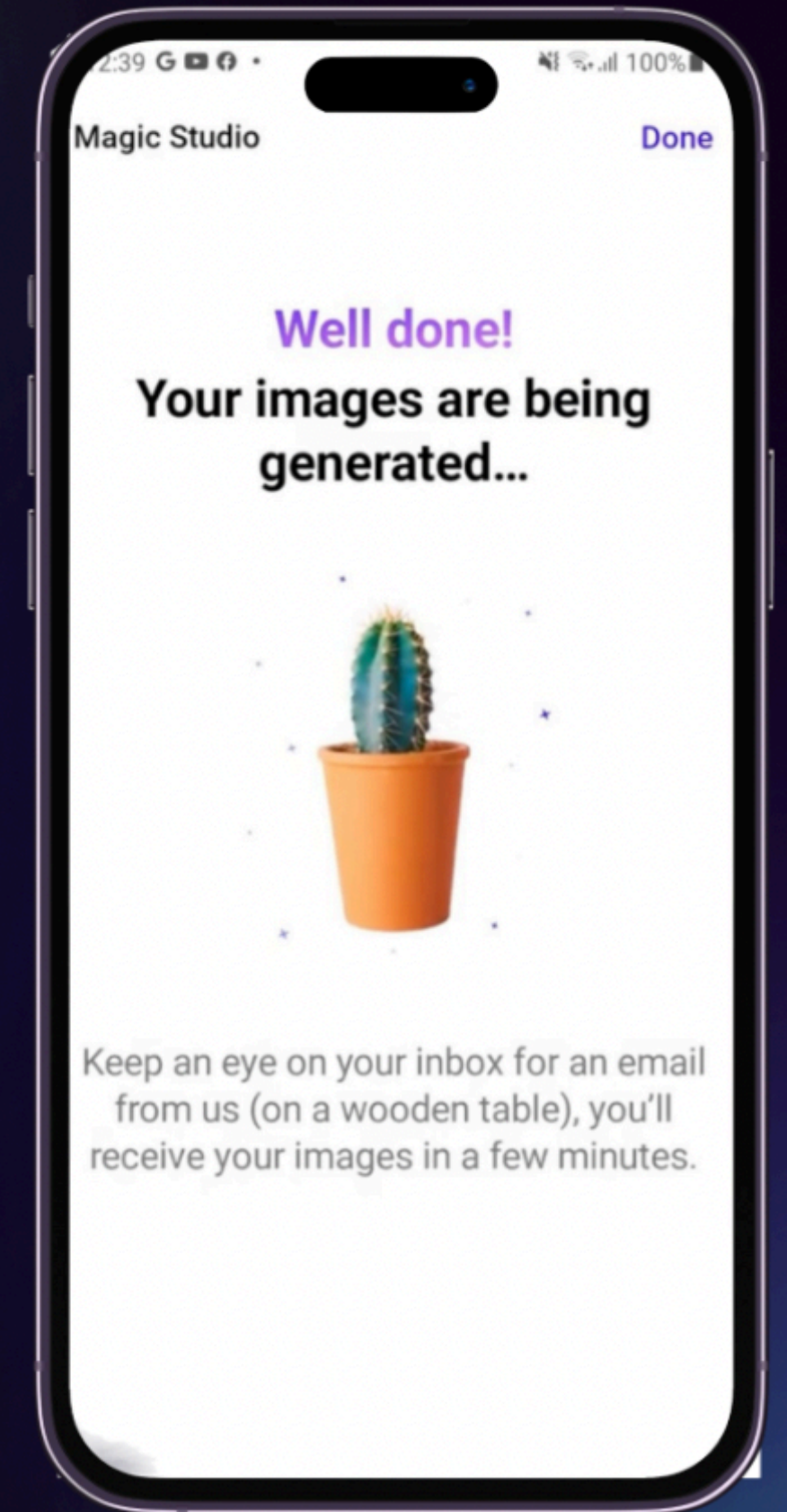
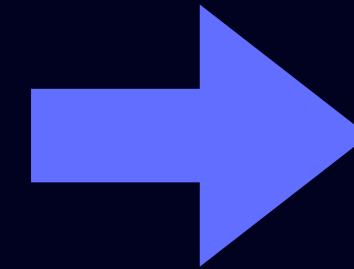
Lyline LIM

**Head of Impact & Sustainability
at  Photoroom**

Why train a model from scratch?

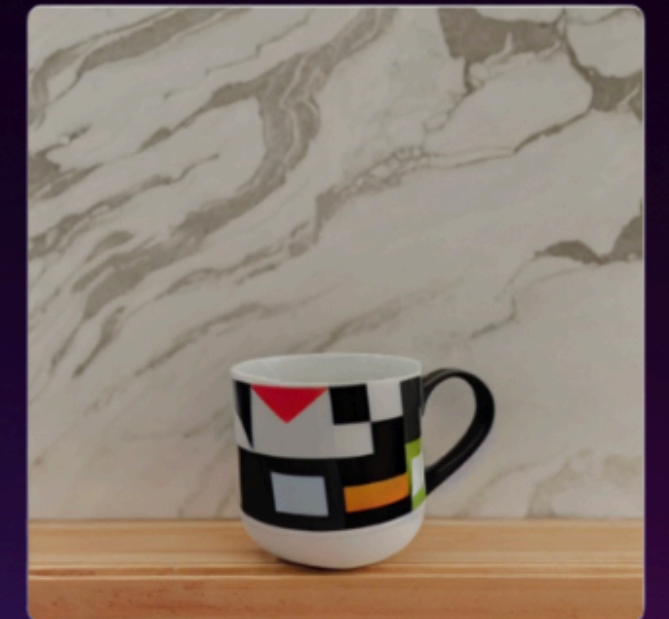


August 2022 - Launching our GenAI hackathon

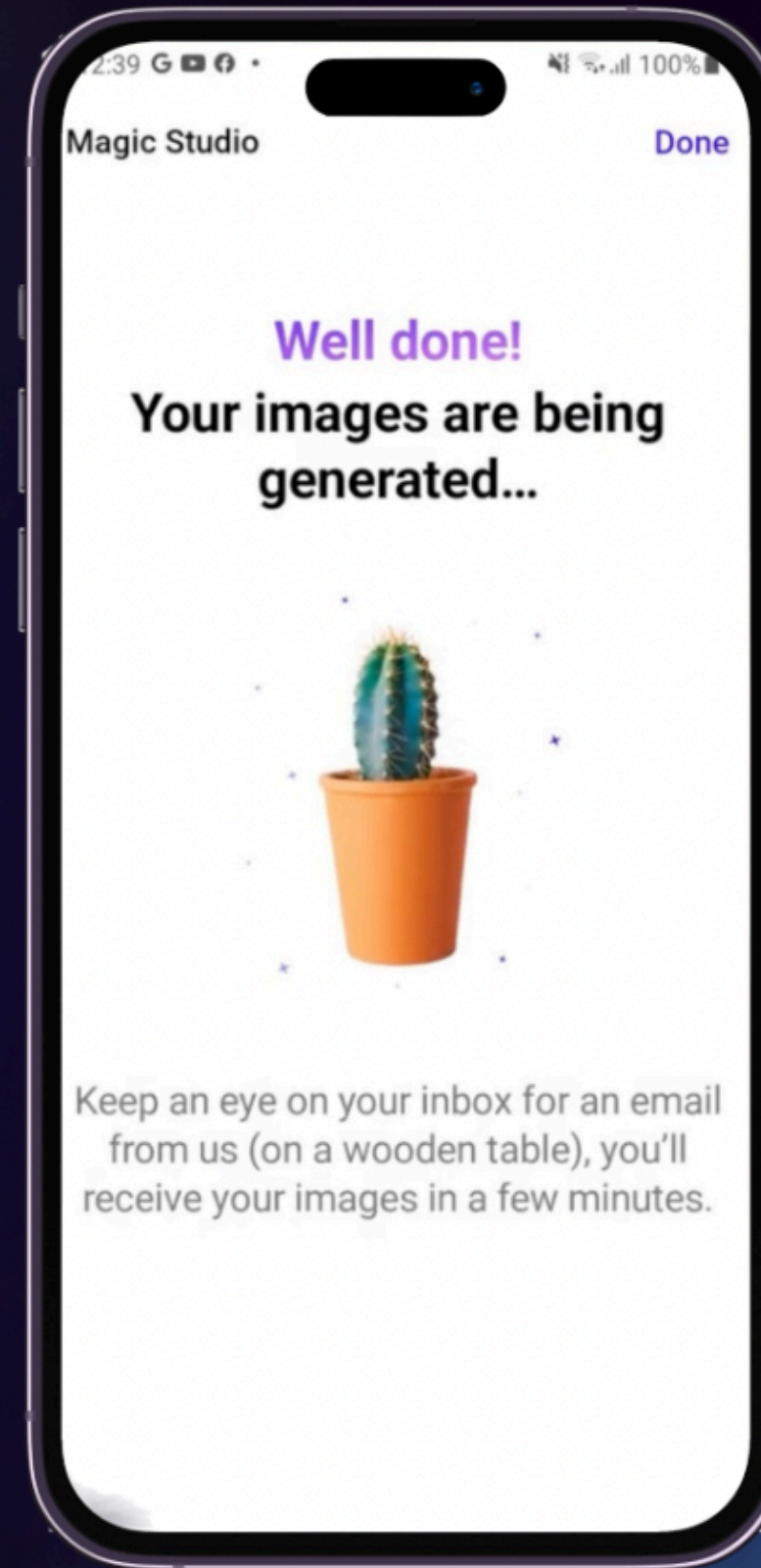


v1:
3 minutes

1. Quality matters



2. Speed matters

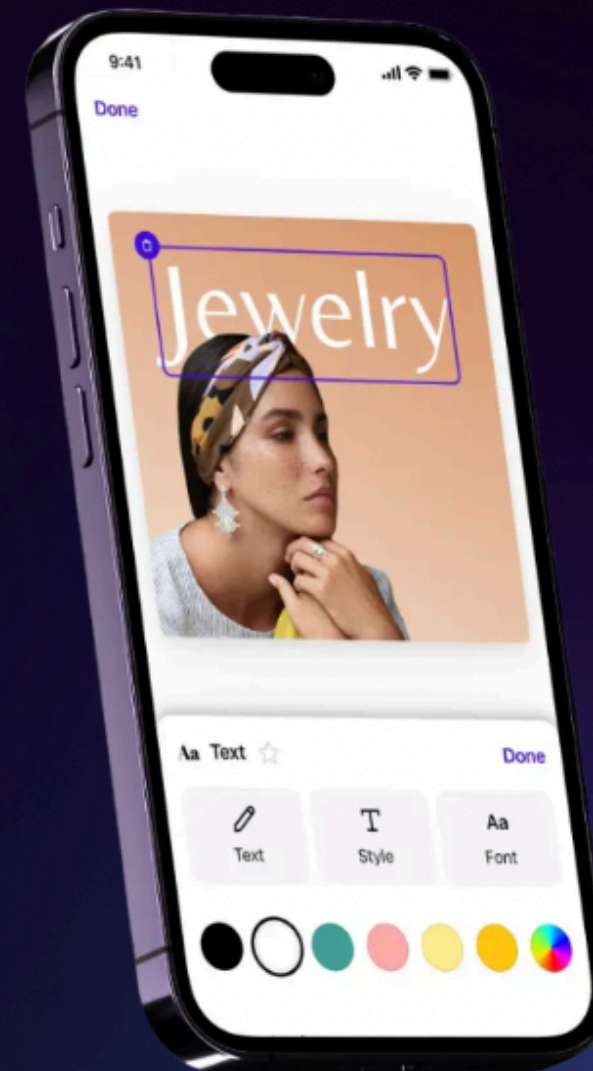


v1:
3 minutes

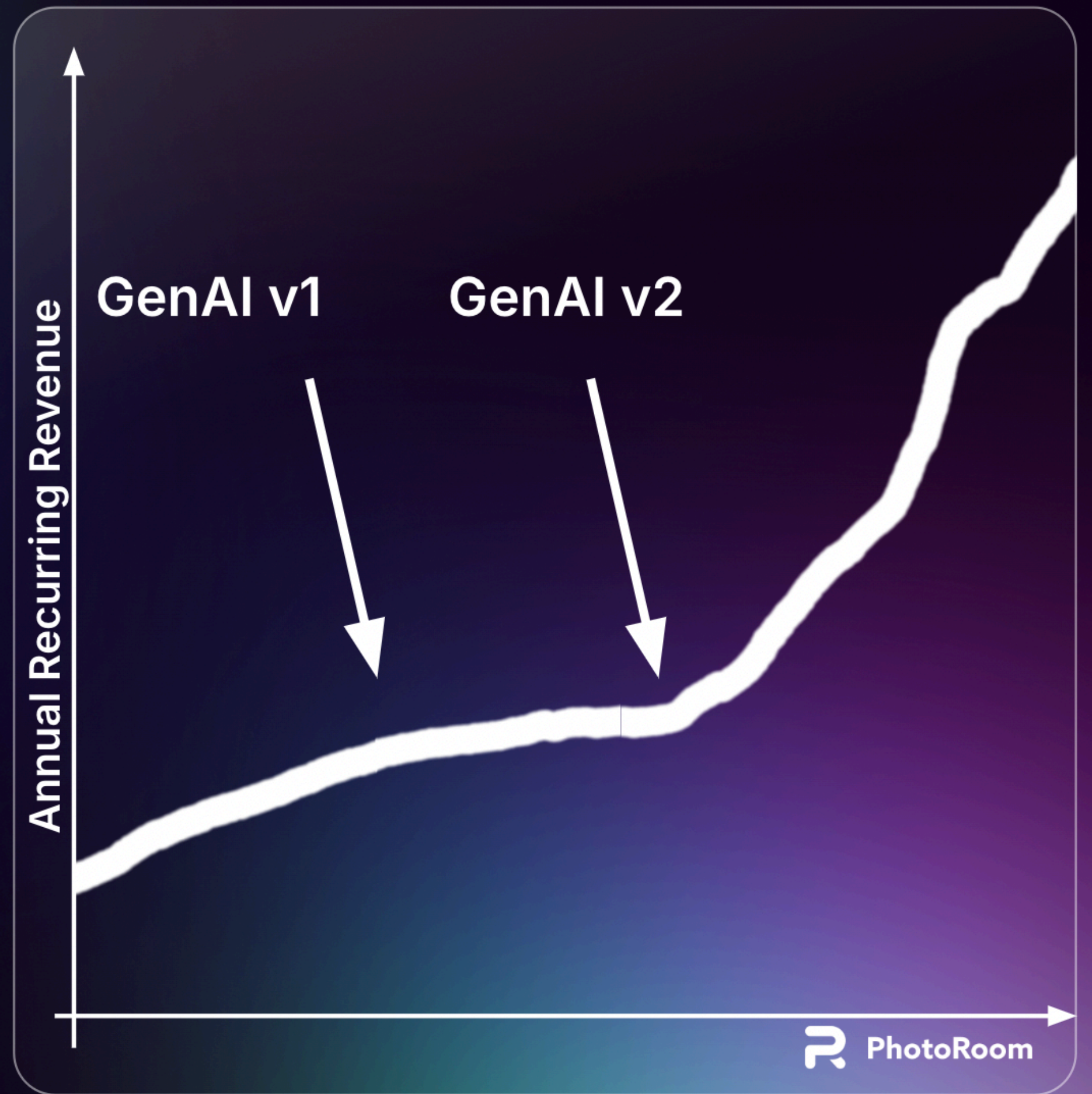


v2:
2 seconds

3. Accessibility matters



Gen AI impact on our business



Why train a model from scratch?

Quality

Speed

Control

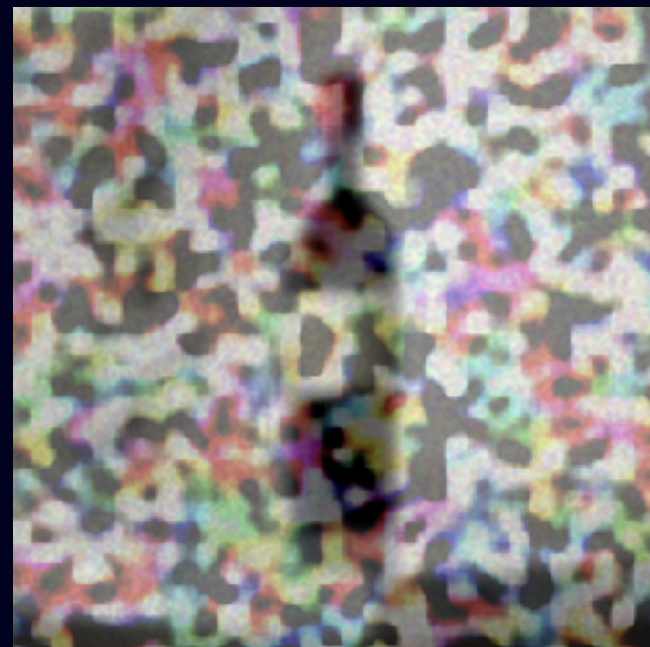
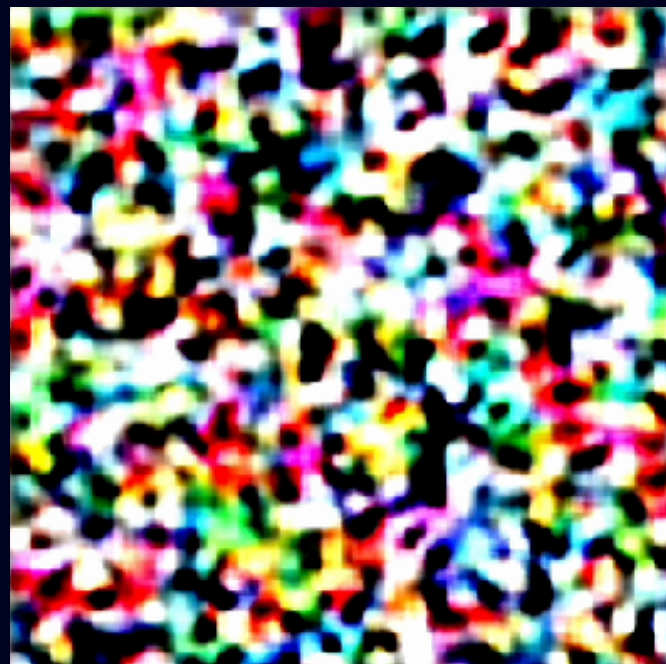
How does **diffusion models** work?

How diffusion works in 1 minute

"a bottle of wine on a marble table"

"a bottle of wine on a marble table"

"a bottle of wine on a marble table"



How diffusion trains in 1 minute

"a bottle of wine on a marble table"

"a bottle of wine on a marble table"

"a bottle of wine on a marble table"



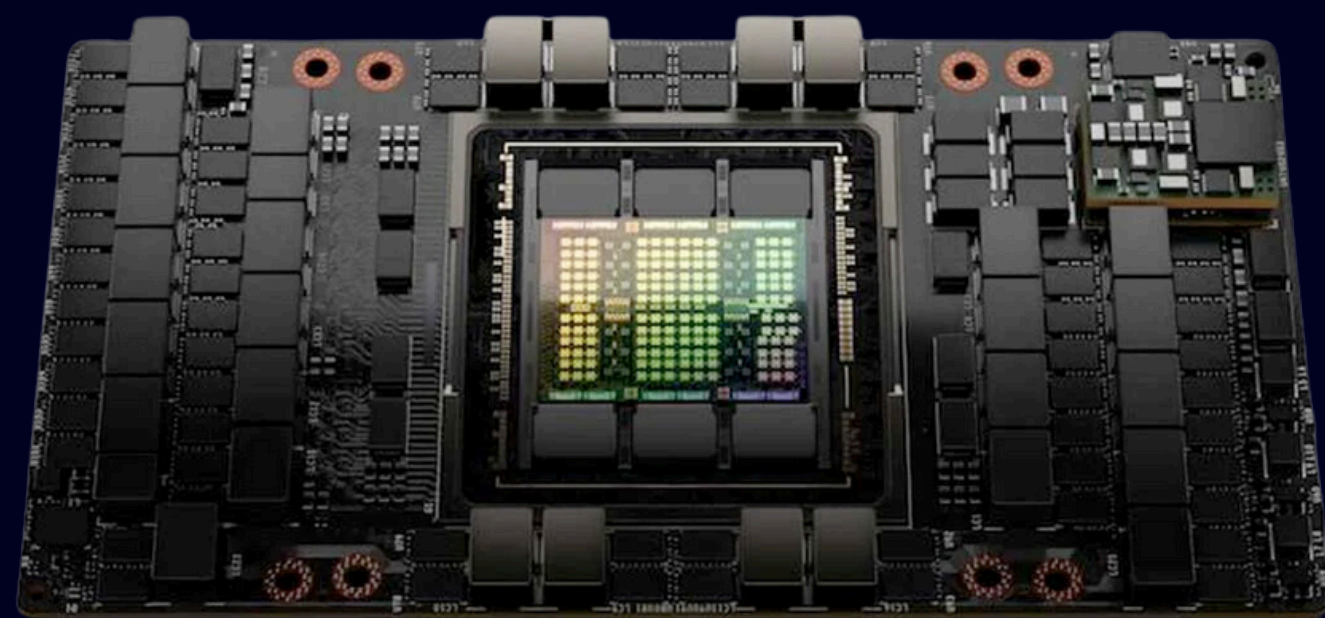
3 key ingredients of an image model

Compute

Algorithms

Data



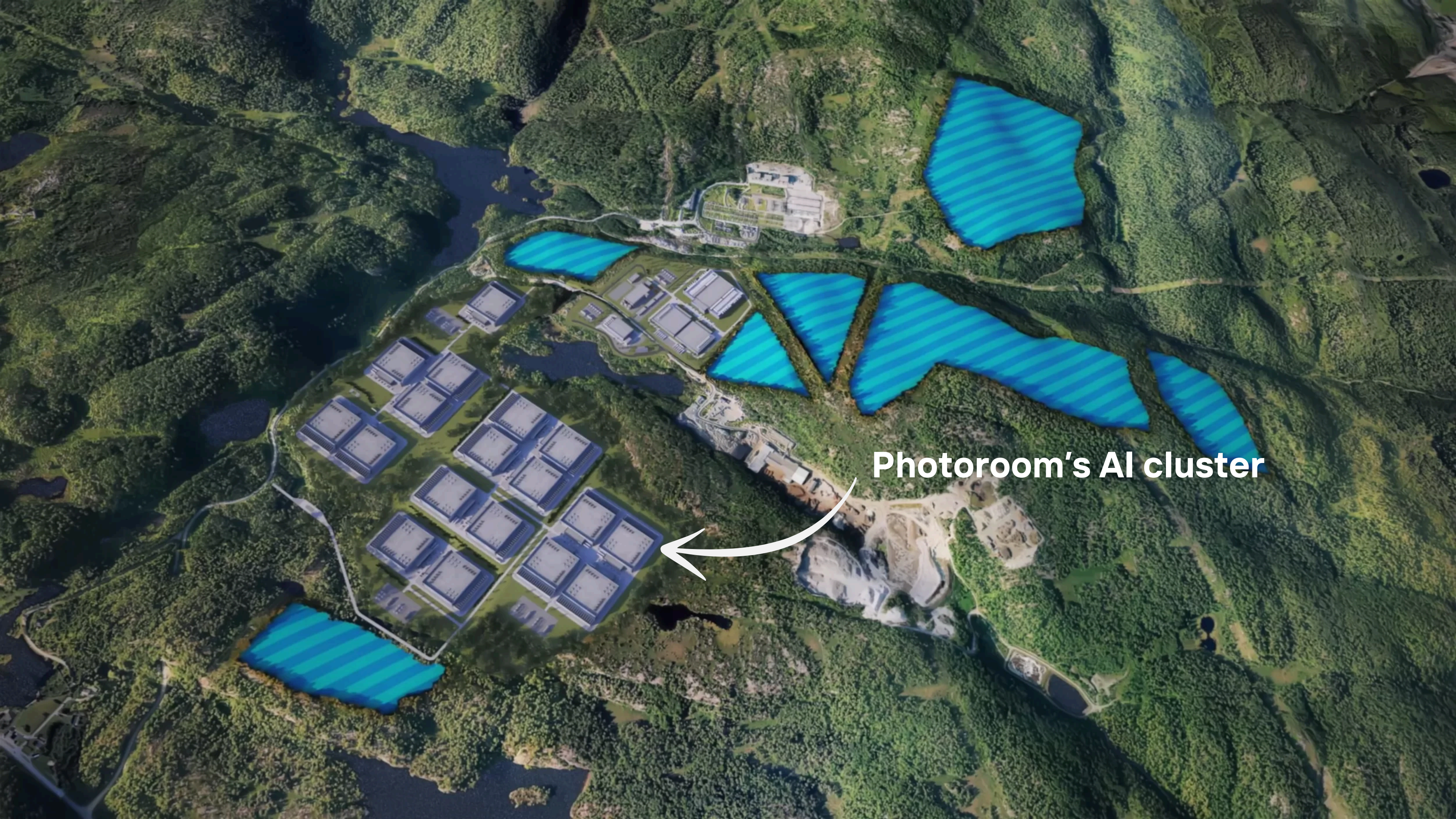


700W per GPU

\$30-\$40k

8 per machine





Potoroom's AI cluster

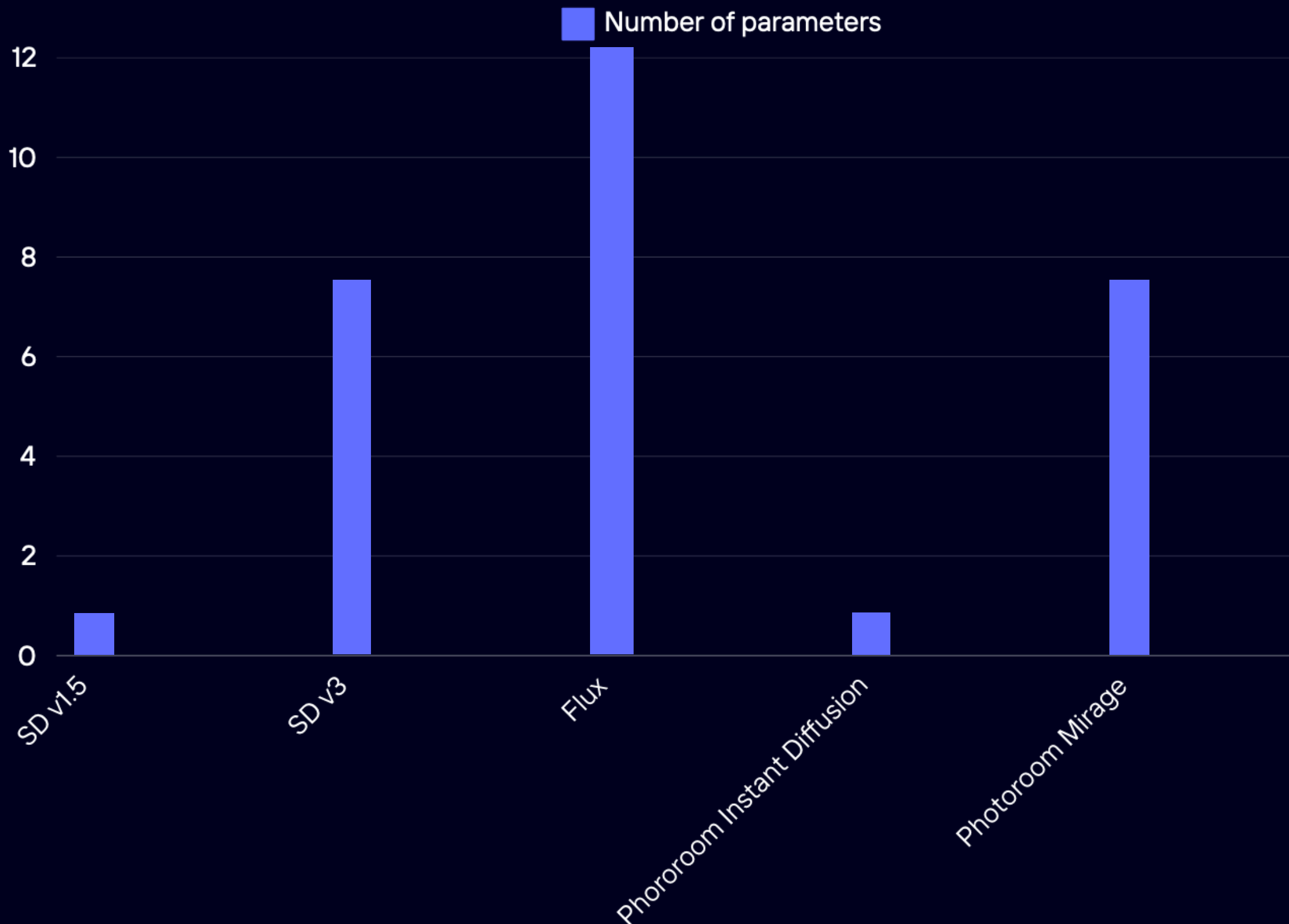
3 key ingredients of an image model

Compute 

Algorithms

Data

Algorithm: picking the right architecture



3 key ingredients of an image model

Compute ✓

Algorithms ✓

Data

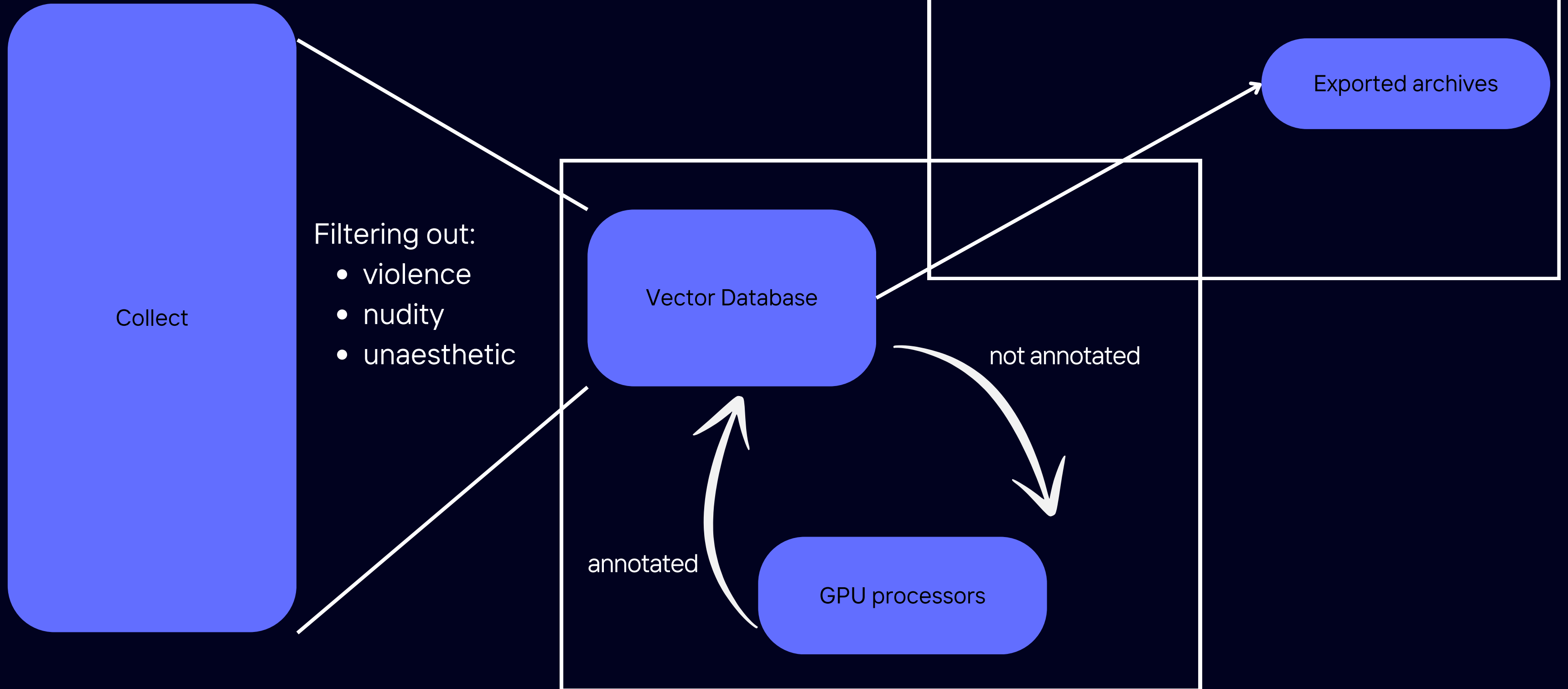
Garbage in

Garbage out

Data: fighting garbage



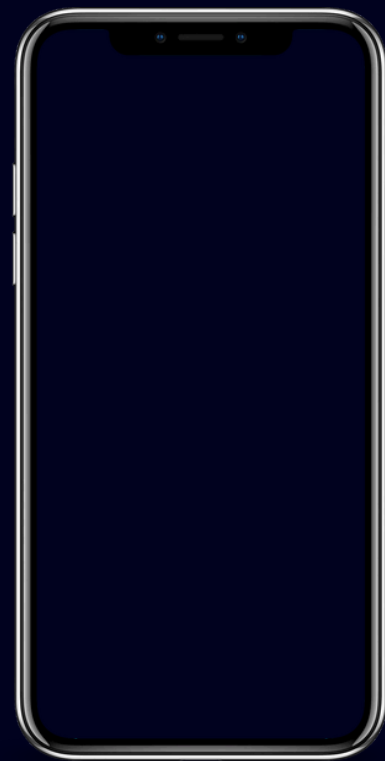
Photoroom / datago



Photoroom / dataroom

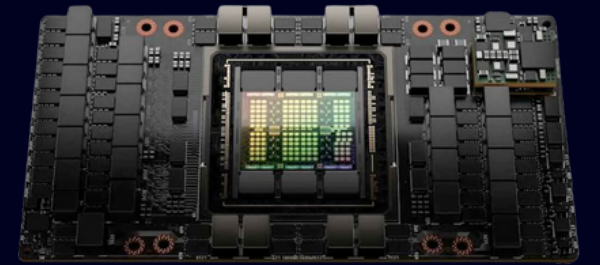
How to *deploy* to millions of users?

Inference: infrastructure & software

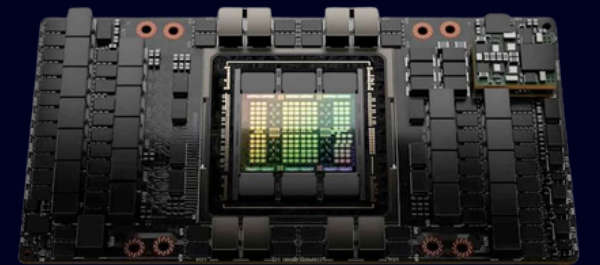


Request

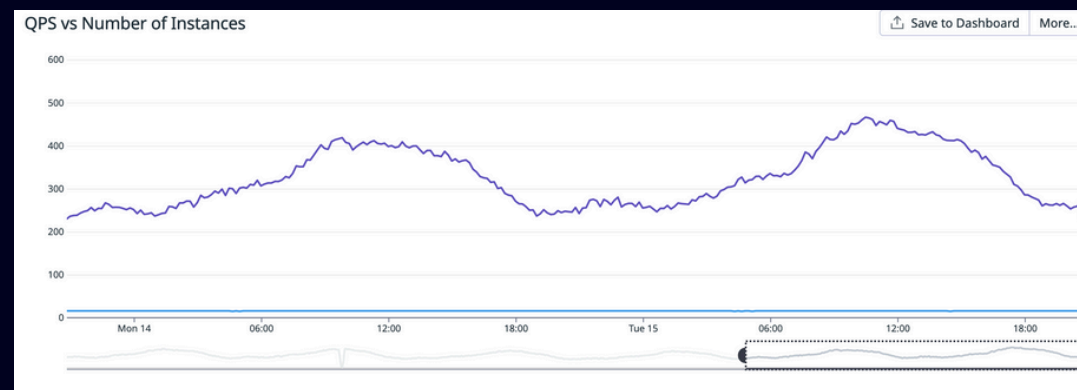
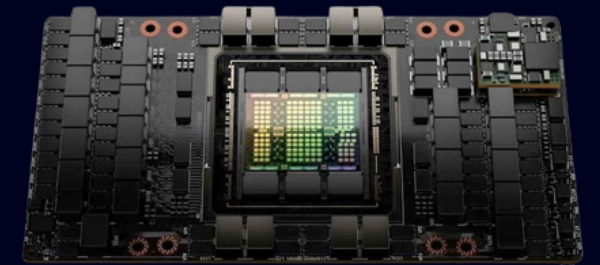
Request



Request



Request



We built our own model to answer customers needs

Quality
Speed
Control



Thank you!



Lyline LIM

**Head of Impact & Sustainability
at  Potoroom**